



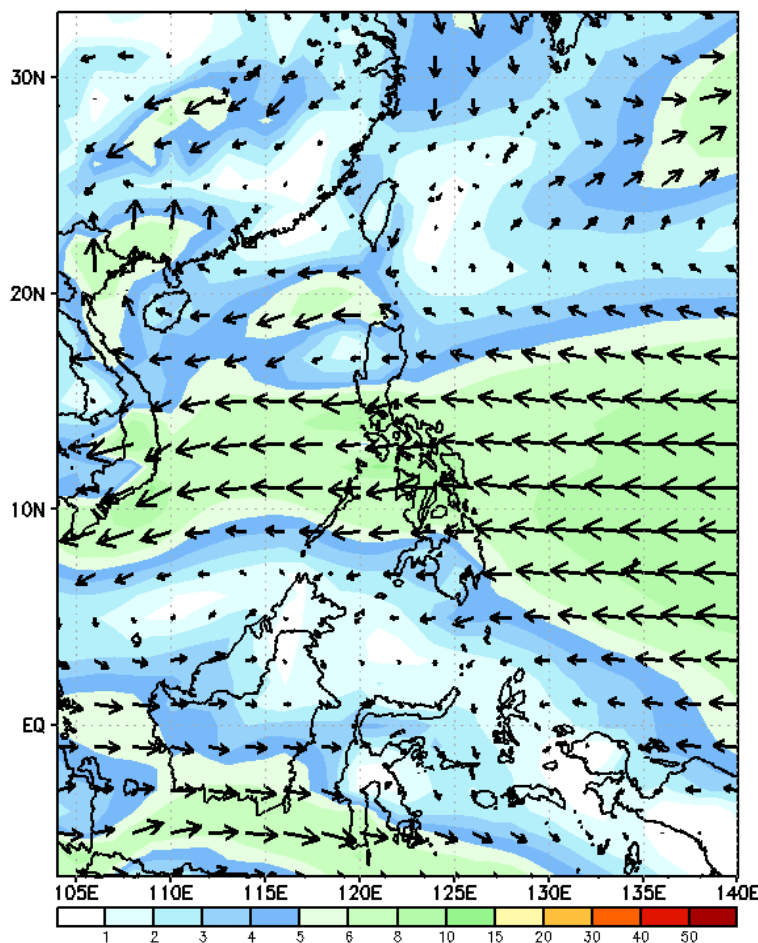
# Week 1 & Week 2 Forecast for the Philippines using GEFS Model



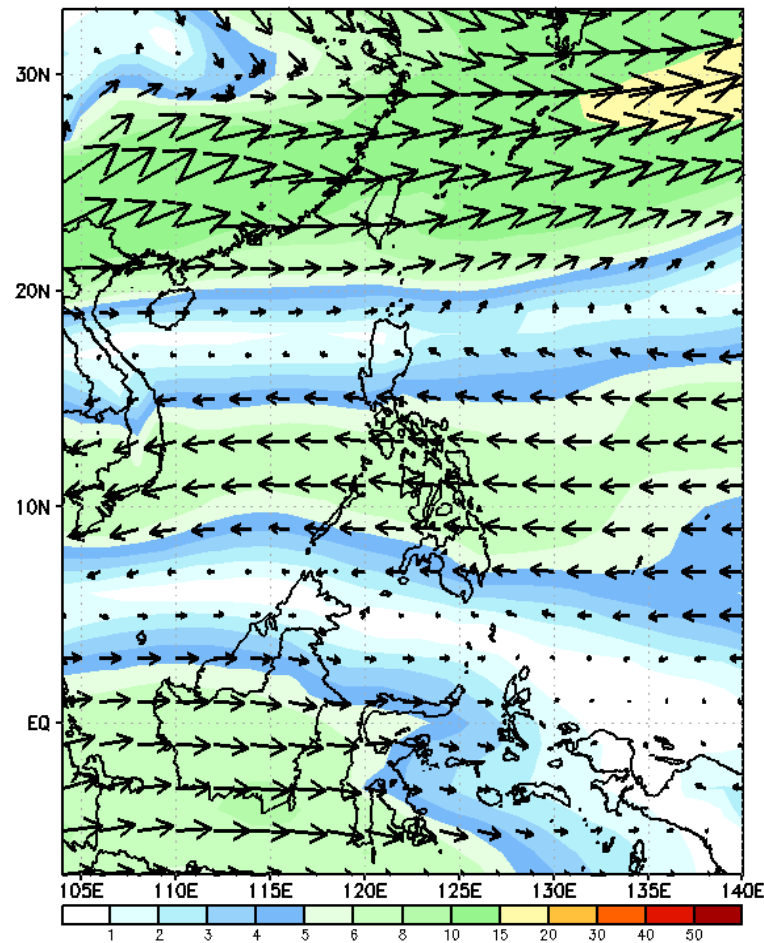
# GEFS Week-1 Wind Forecasts:

Week 1: Mar 28- Apr 03, 2025

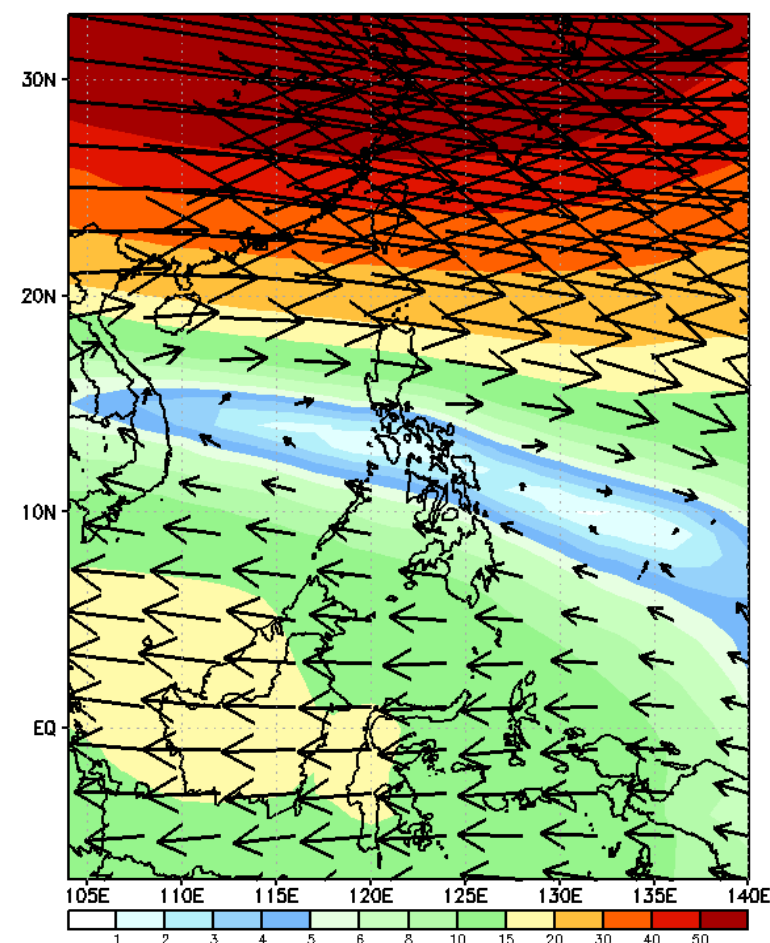
GEFS Week-1 850-hPa Wind Total  
Valid: 20250328 - 20250403



GEFS Week-1 700-hPa Wind Total  
Valid: 20250328 - 20250403

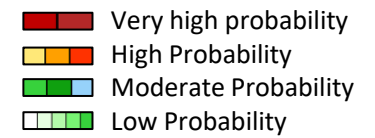


GEFS Week-1 200-hPa Wind Total  
Valid: 20250328 - 20250403



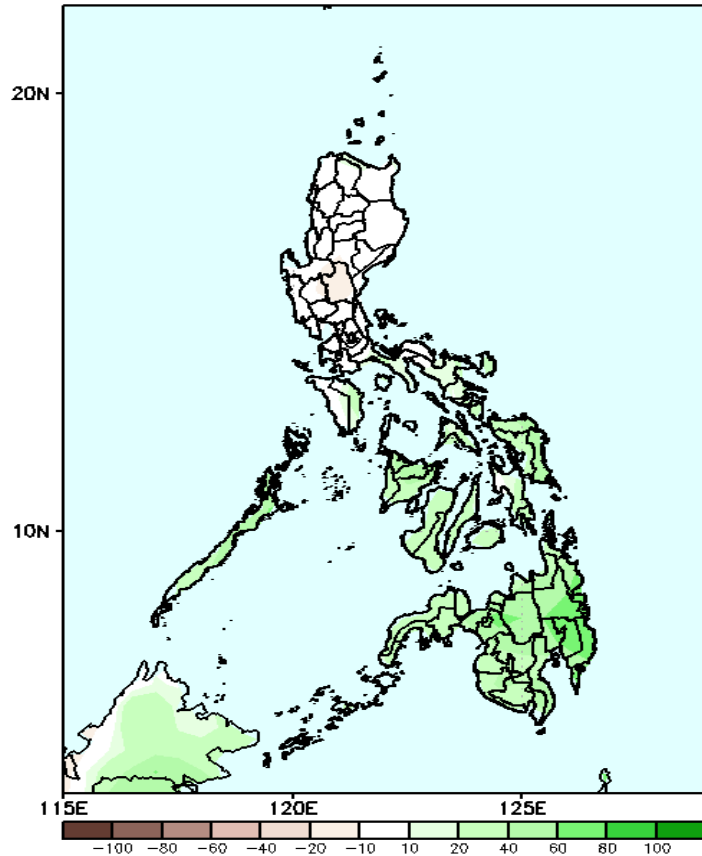
Northeast windflow affecting Extreme Northern Luzon, Easterlies affecting most parts of the country during the forecast period

# Precipitation Anomaly and Exceedance Probability > 25/50 mm



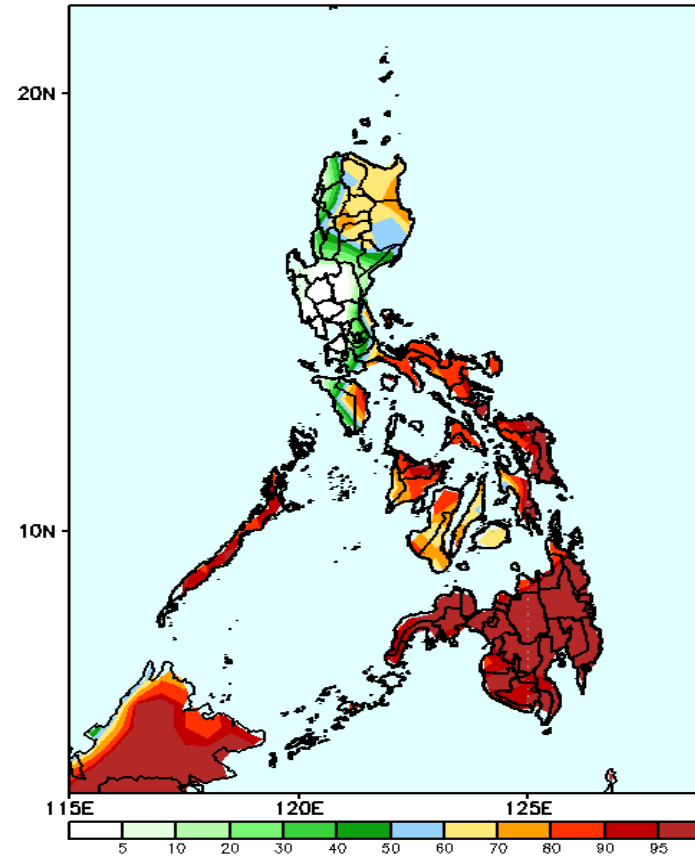
Week 1: Mar 28- Apr 03, 2025

GEFS Week-1 Precip Anomaly  
Valid: 20250328 - 20250403



Increase of rainfall of 20-100mm is expected in Occ. Mindoro, Palawan, Bicol Region and most parts of Visayas and Mindanao.

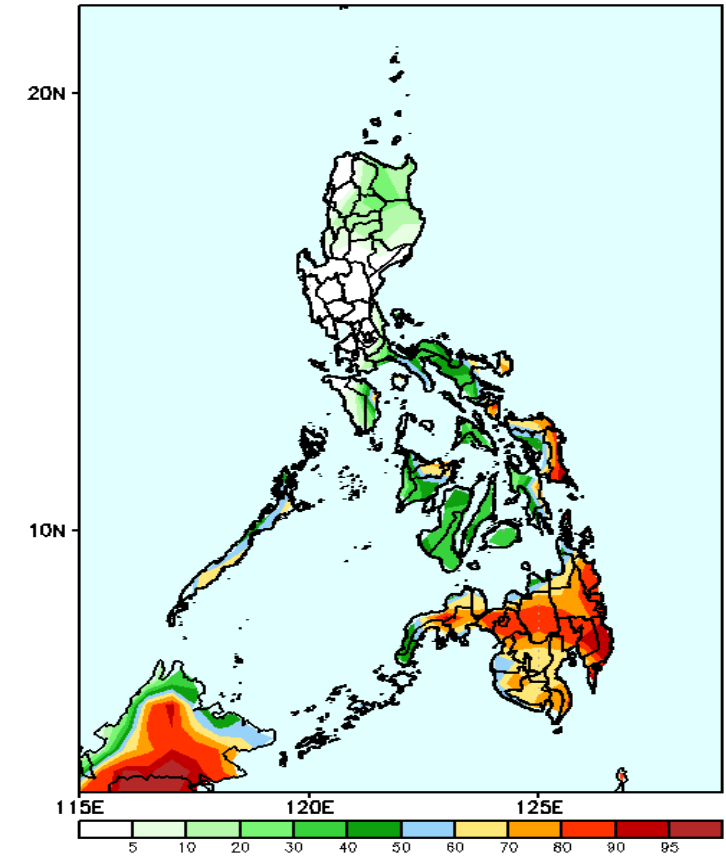
GEFS Week-1 Exceedance Prob. > 25mm  
Valid: 20250328 - 20250403



## Probability to Exceed 25mm

- High to very high over most parts of Bicol Region, Occ. Mindoro, Palawan, and most of Visayas and Mindanao;
- Moderate to high over northern and southern Luzon;
- Low over the rest of Luzon.

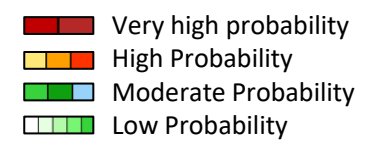
GEFS Week-1 Exceedance Prob. > 50mm  
Valid: 20250328 - 20250403



## Probability to Exceed 50mm

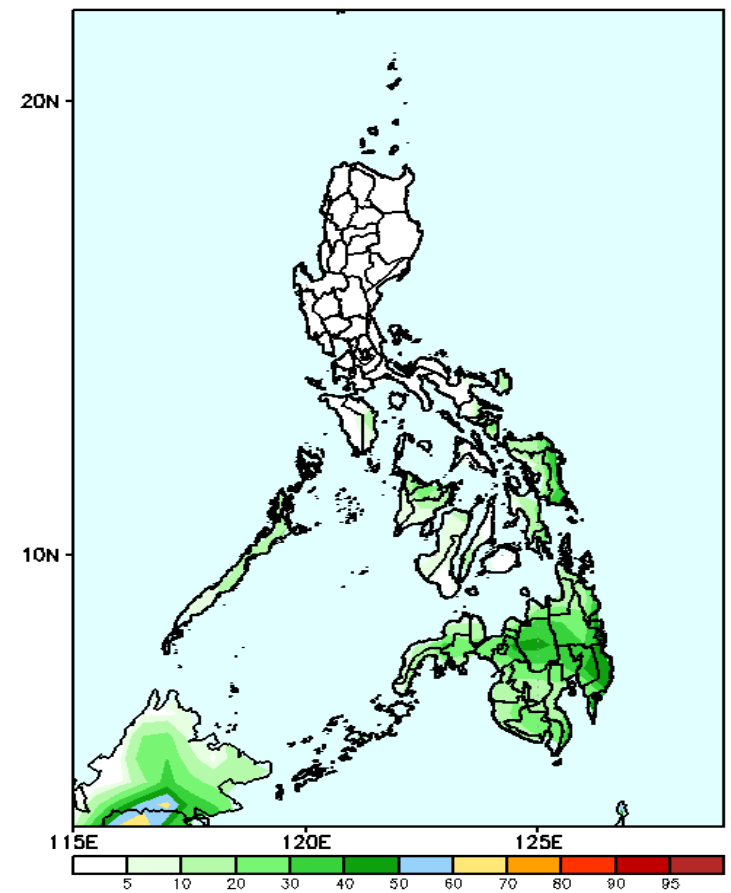
- High to very high over Davao Oriental and Davao de Oro;
- Moderate to high over Bicol Region, portion of Occidental Mindoro, Palawan, most of Visayas and the rest of Mindanao;
- Low to moderate over the rest of Luzon.

# Exceedance Probability > 100/150/200 mm



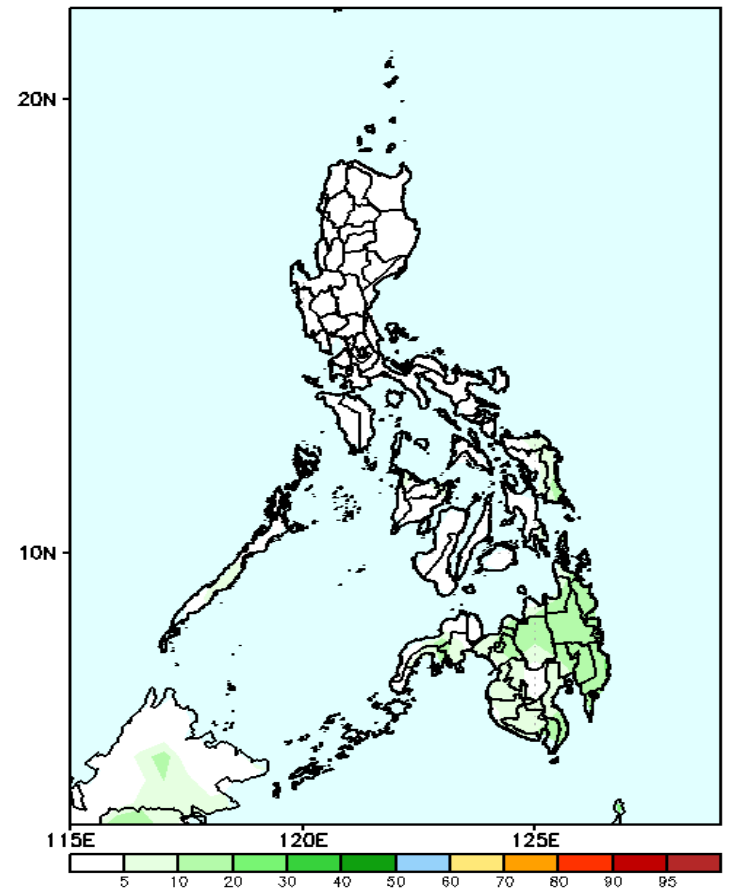
## Week 1: Mar 28- Apr 03, 2025

GEFS Week-1 Exceedance Prob. > 100mm  
Valid: 20250328 - 20250403



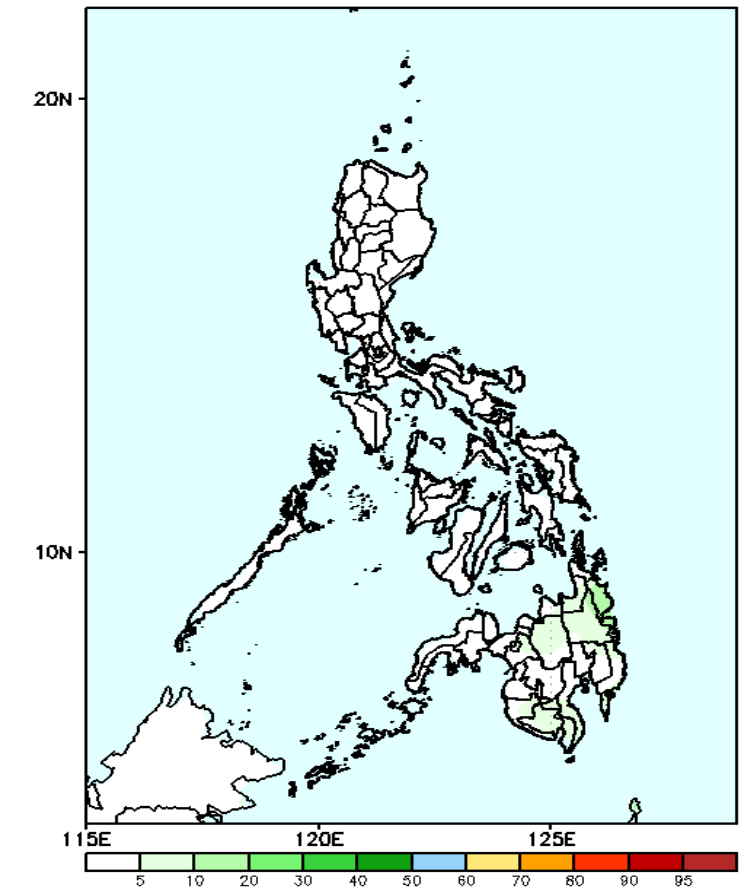
- Probability to Exceed 100mm**
- Low to moderate over Eastern Samar and most of Mindanao;
  - Low over the rest of the country.

GEFS Week-1 Exceedance Prob. > 150mm  
Valid: 20250328 - 20250403



- Probability to Exceed 150mm**
- Low across the country.

GEFS Week-1 Exceedance Prob. > 200mm  
Valid: 20250328 - 20250403

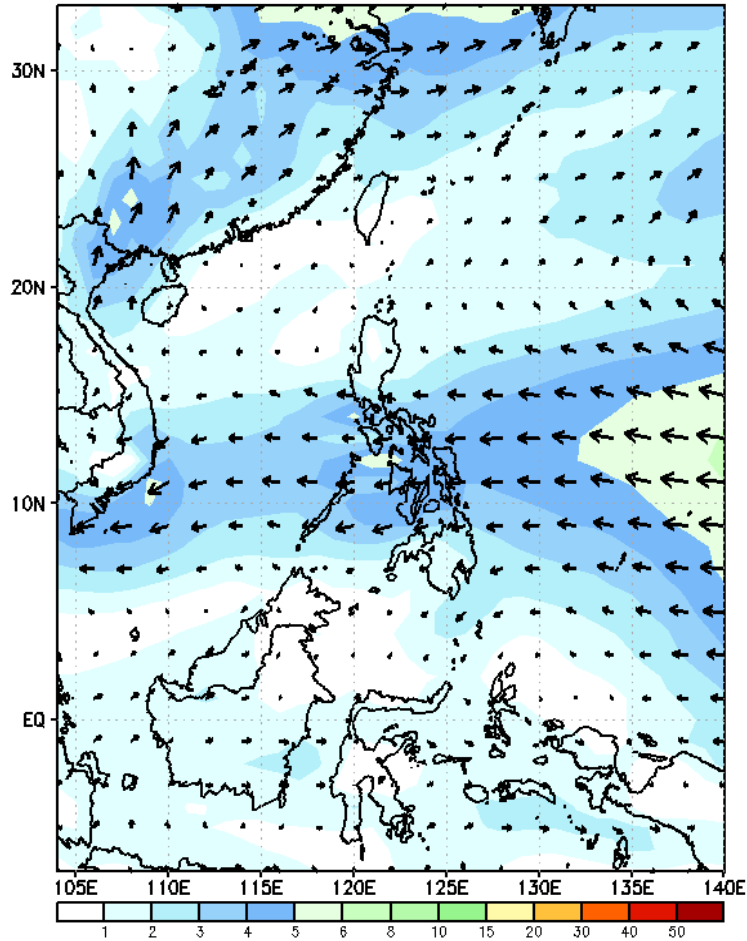


- Probability to Exceed 200mm**
- Low across the country.

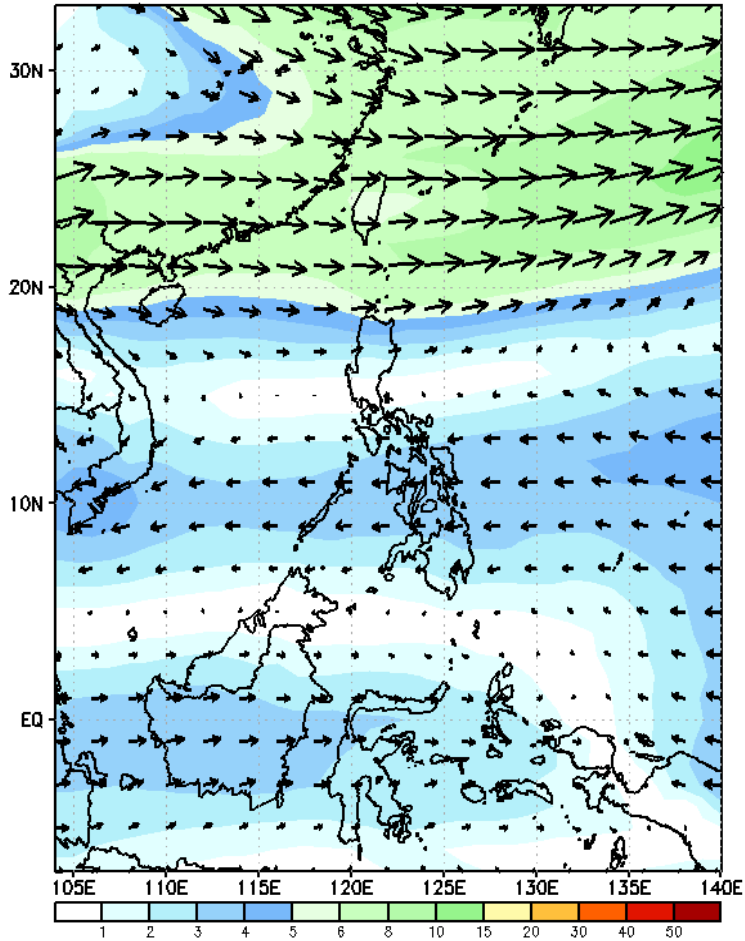
# GEFS Week-2 Wind Forecasts:

Week 2: Apr 04-10, 2025

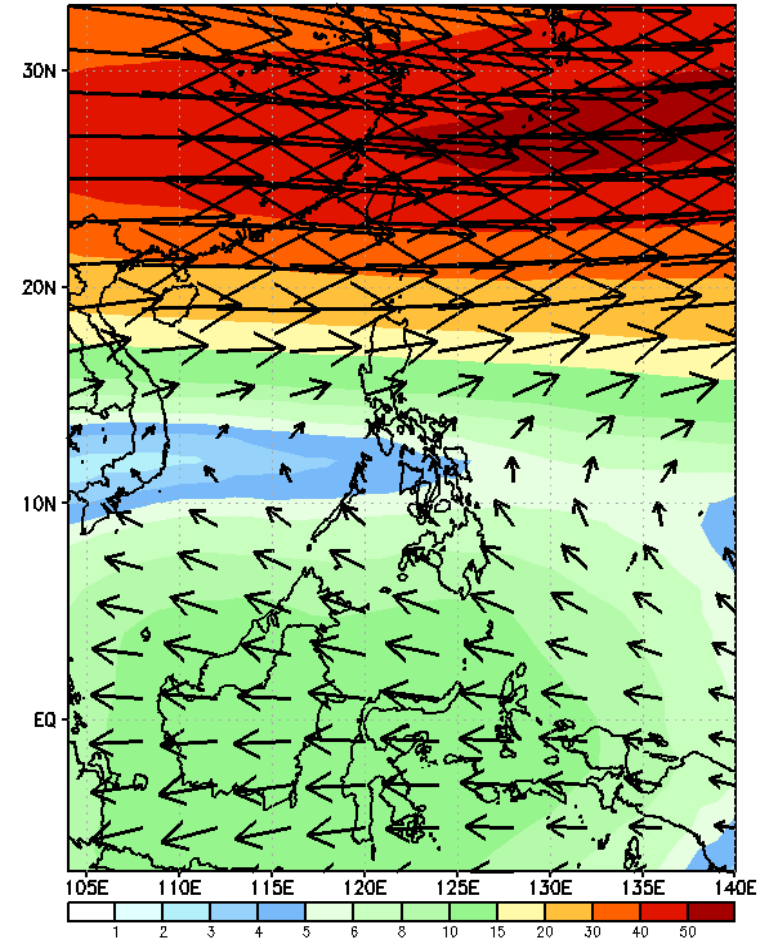
GEFS Week-2 850-hPa Wind Total  
Valid: 20250404 - 20250410



GEFS Week-2 700-hPa Wind Total  
Valid: 20250404 - 20250410



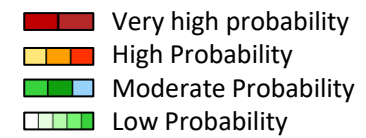
GEFS Week-2 200-hPa Wind Total  
Valid: 20250404 - 20250410



Easterlies affecting most parts of the country during the forecast period

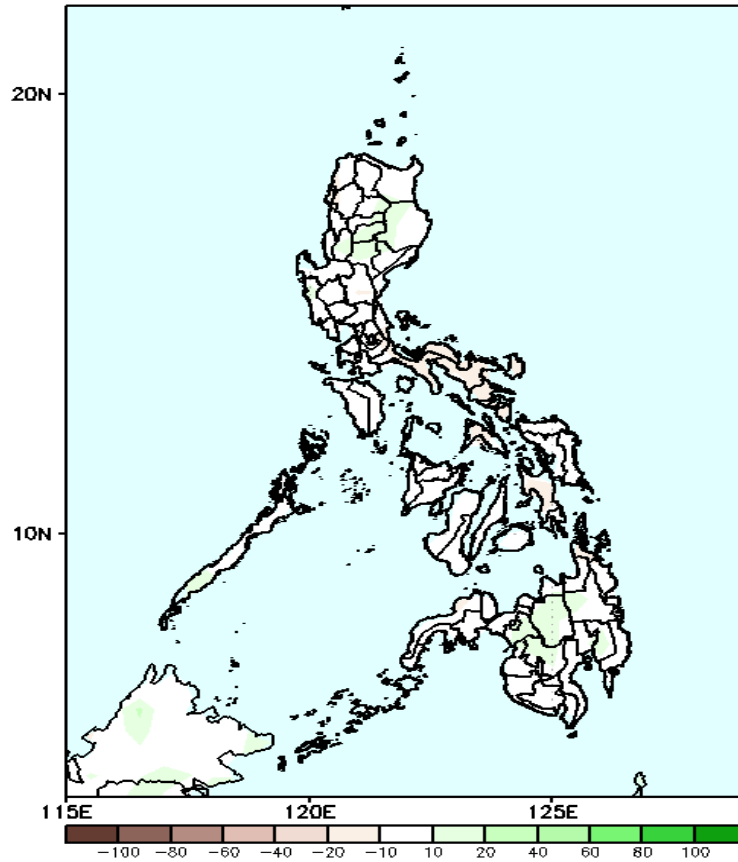


# Precipitation Anomaly and Exceedance Probability > 25/50 mm

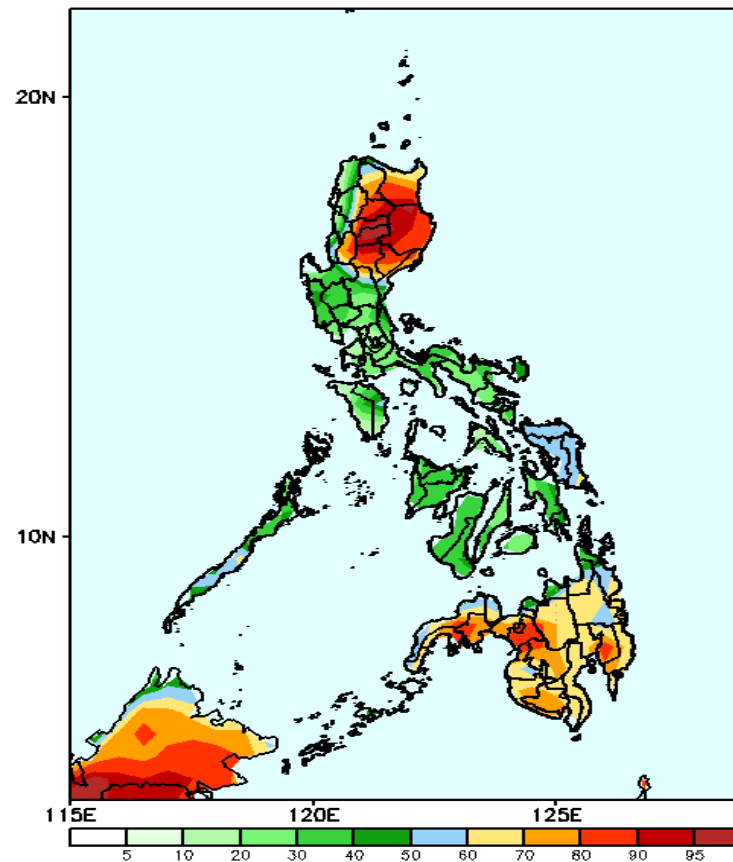


Week 2: Apr 04-10, 2025

GEFS Week-2 Precip Anomaly  
Valid: 20250404 - 20250410



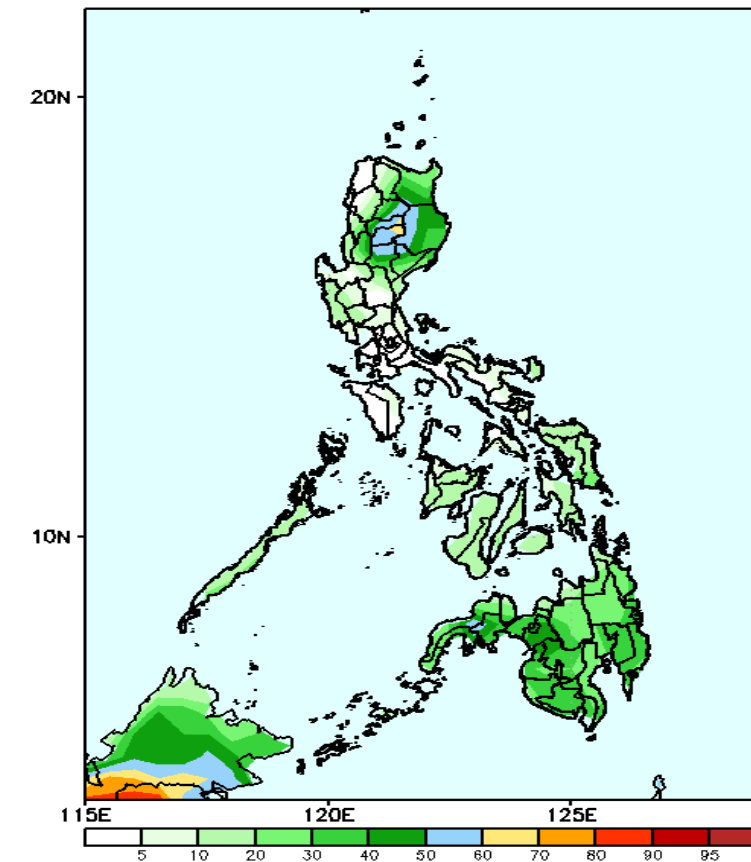
GEFS Week-2 Exceedance Prob. > 25mm  
Valid: 20250404 - 20250410



## Probability to Exceed 25mm

- High to very high over most parts of CAR and Cagayan Valley;
- Moderate to high over the rest of Northern Luzon, Samar provinces, and most parts of Mindanao;
- Low to Moderate over the rest of Luzon and Visayas.

GEFS Week-2 Exceedance Prob. > 50mm  
Valid: 20250404 - 20250410



## Probability to Exceed 50mm

- Moderate to high over Mt. Province and Ifugao;
- Low to moderate over the rest of Northern Luzon and most of Mindanao;
- Low over the rest of the country.

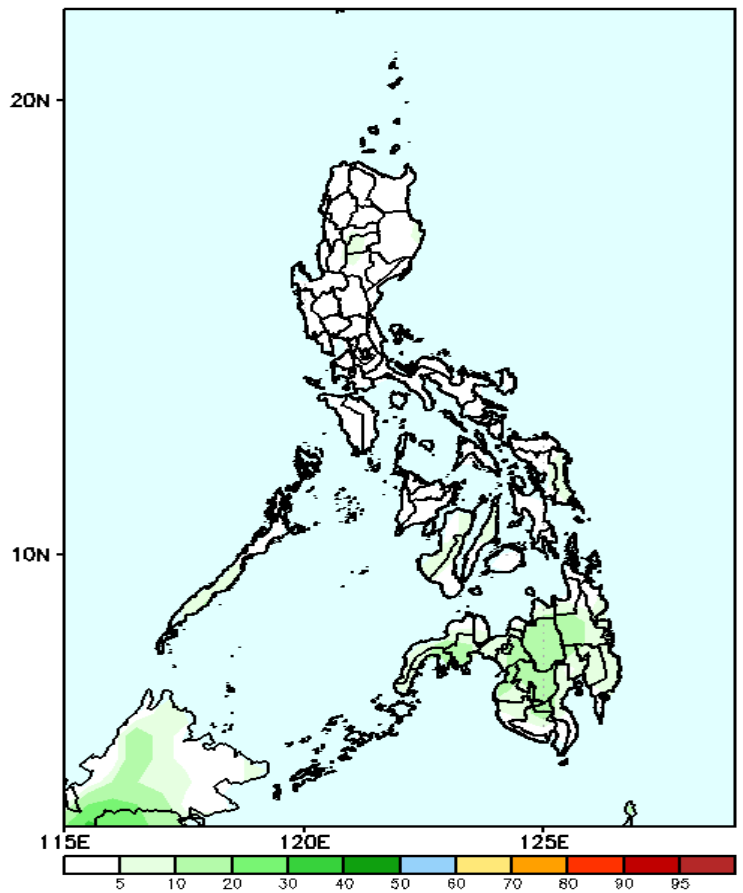
Increase of rainfall of 10-30mm is expected over CAR and central Mindanao.

# Exceedance Probability > 100/150/200 mm

- Very high probability
- High Probability
- Moderate Probability
- Low Probability

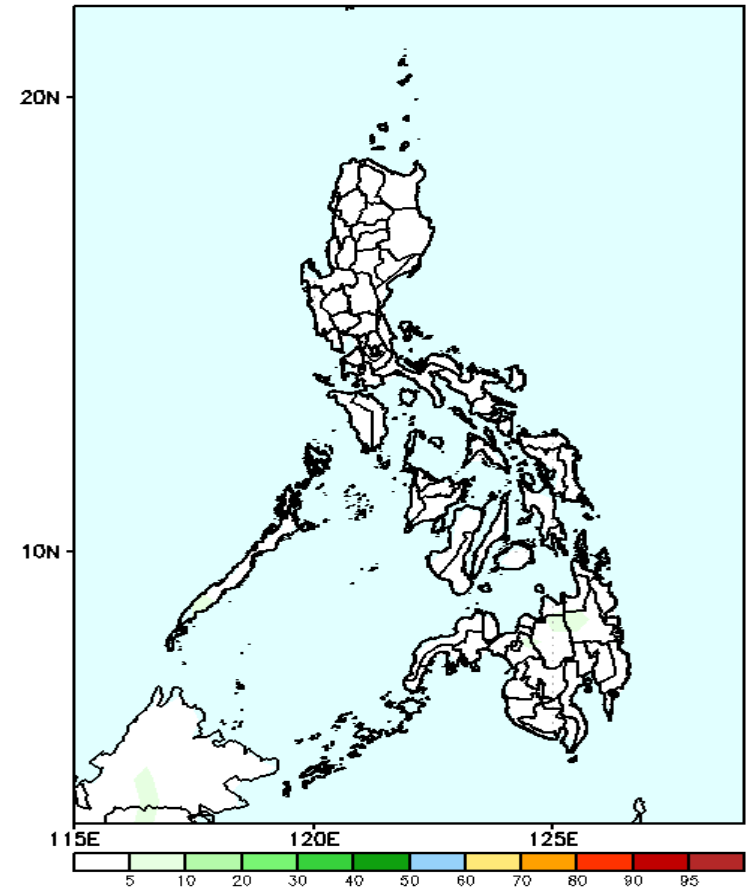
## Week 2: Apr 04-10, 2025

GEFS Week-2 Exceedance Prob. > 100mm  
Valid: 20250404 - 20250410



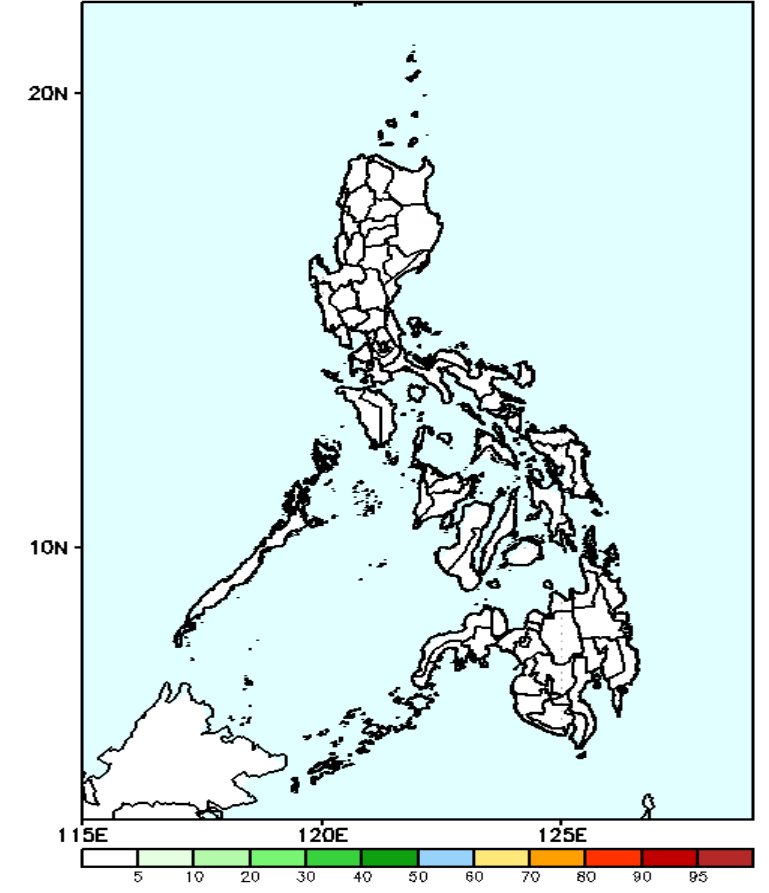
**Probability to Exceed 100mm**  
•Low across the country.

GEFS Week-2 Exceedance Prob. > 150mm  
Valid: 20250404 - 20250410



**Probability to Exceed 150mm**  
•Low across the country.

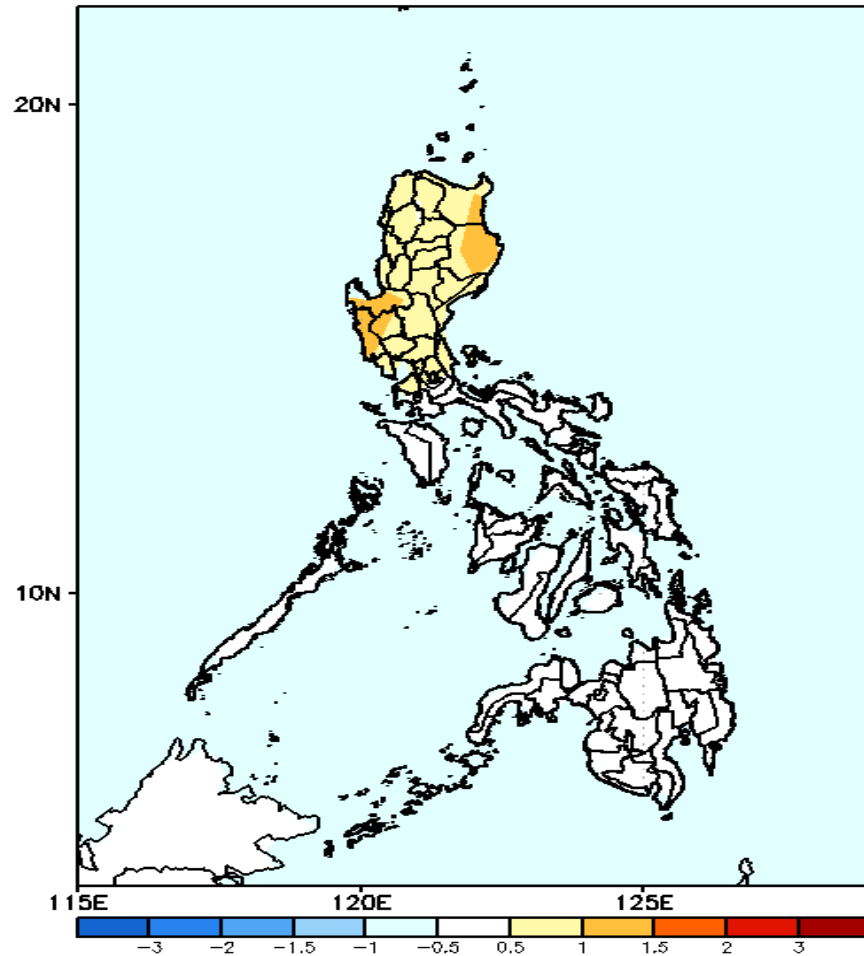
GEFS Week-2 Exceedance Prob. > 200mm  
Valid: 20250404 - 20250410



**Probability to Exceed 200mm**  
•Low across the country.

# GEFS Week-1 & 2 Forecasts: T2m Anomaly

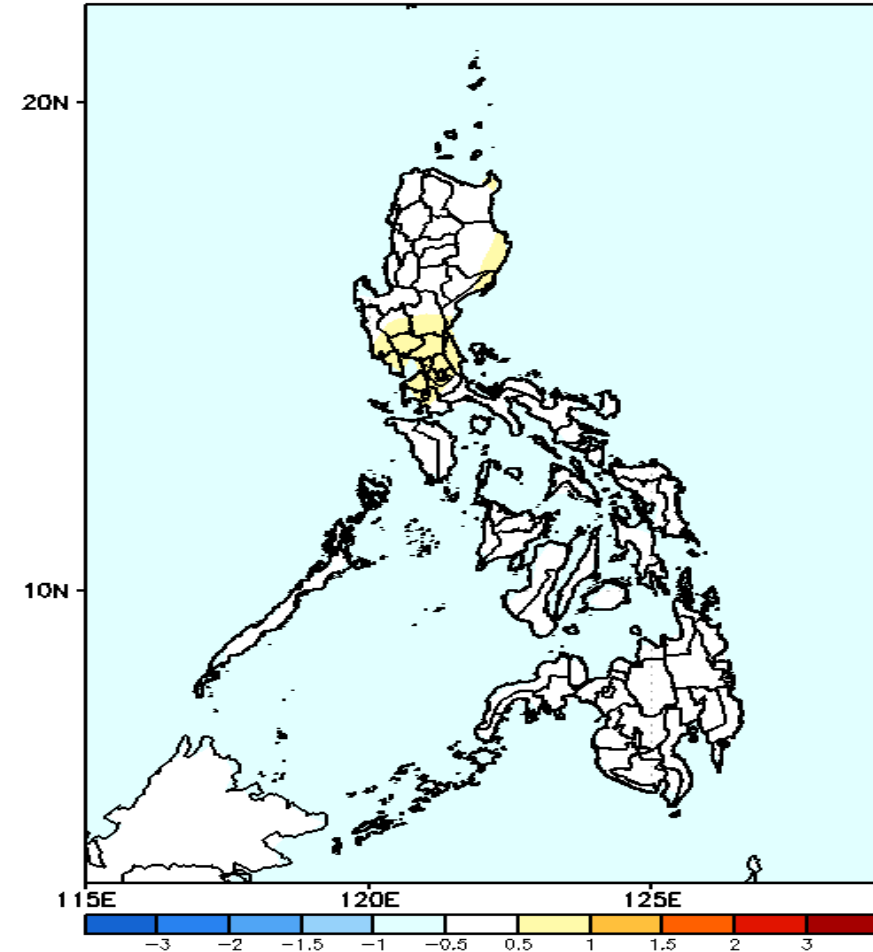
GEFS Week-1 T2m Anomaly  
Valid: 20250328 - 20250403



## 2m Temperature Week 1: Mar 28- Apr 03, 2025

Near to warmer than average surface air temperature will likely be experienced in most parts of Luzon while Near average temperature is expected in Visayas and Mindanao.

GEFS Week-2 T2m Anomaly  
Valid: 20250404 - 20250410



## 2m Temperature Week 2: Apr 04-10, 2025

Near to slightly warmer than average surface air temperature will likely be experienced in most parts of the country.